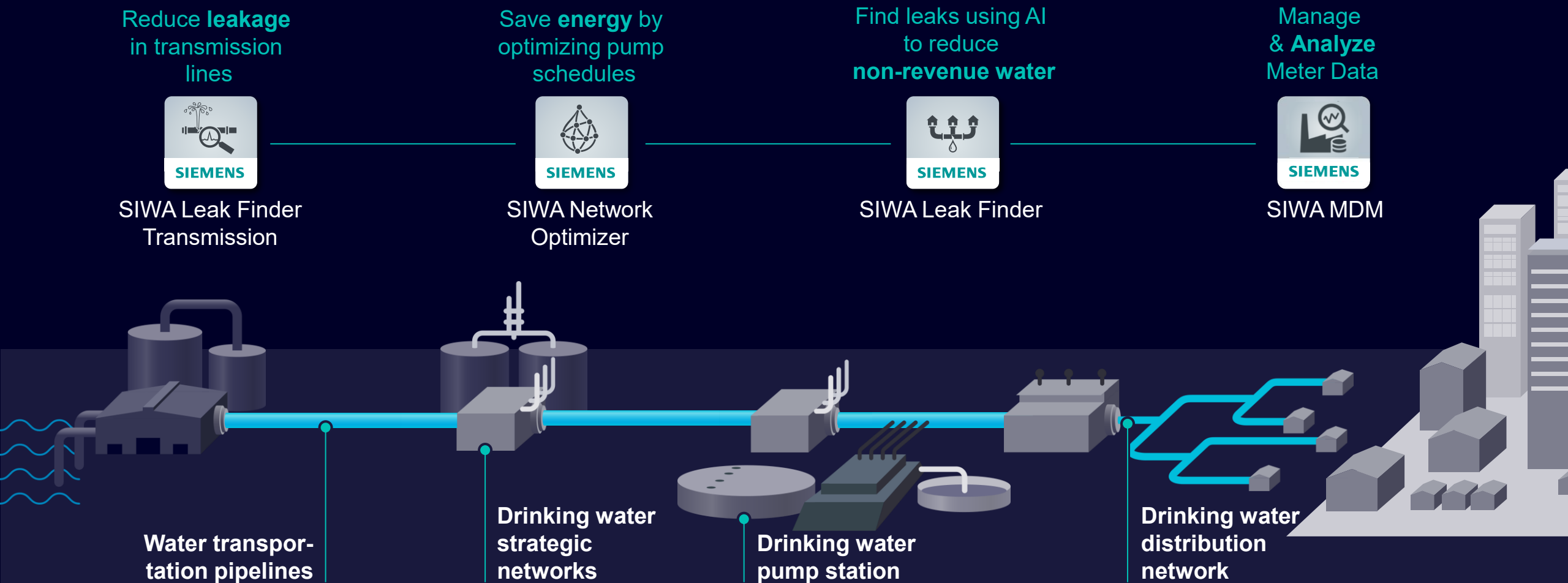


Siemens Xcelerator is a portfolio of interoperable hardware and software

Seamless integration from OT to IT to Impact across the water cycle

Please follow this link:





Reduce non-revenue water by up to 50%

AI identifies **leaks as small as 0.25l/s** and can **locate to within 200m**

Deployment has been simplified and data appears in the app **within 2 hours of a new flow meter install.**

Immediately the AI starts learning the behaviour of the network and is **identifying leaks within one month for new sensors**, and from day 1 if there is historic data.

Proven in over a dozen countries. A typical **ROI of <36months** and inbuilt tools to optimize capital investment for pipe replacement and sensor positioning

SIEMENS

Demo wide range of capabilities that transform experience for users

Each user story links back to a business benefit. Synergy from smart meters

1 AI enabled Identification and localization of leak events

2 Heatmap representation of live issues and operational KPIs

3 GIS view of network to contextualize timeseries data

4 Automatic identification of sensor and data quality issues

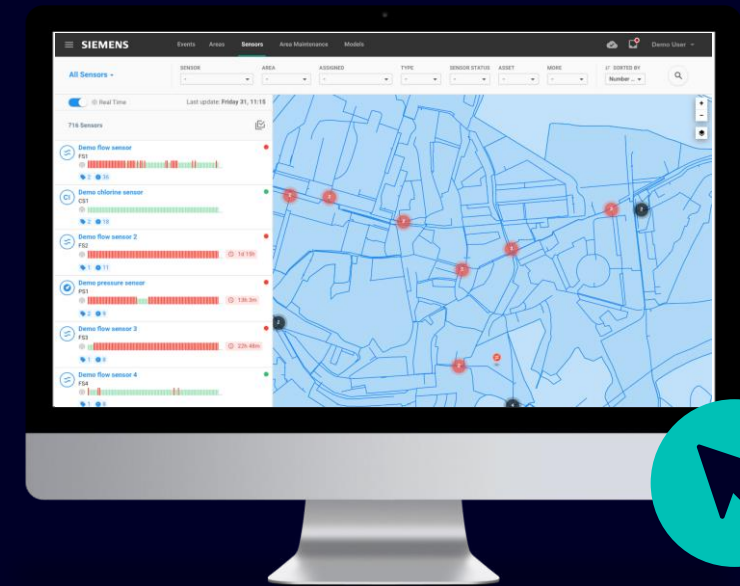
5 Network schematic representation

6 Integrated workflow for managing field teams

7 Calculation of optimal capital investment

8 Scenario modelling combining sensor data and hydraulic models

9 Integration with SIWA MDM for a holistic view of the network behavior



[Link to demo](#)